



## Al Alwan Villa

FIRST FLOOR

## Table of Contents

Cover	1
Table of Contents	2
Images	3

## Product data sheets

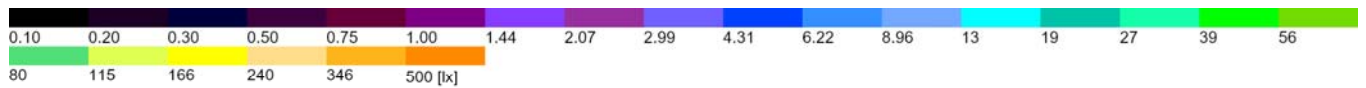
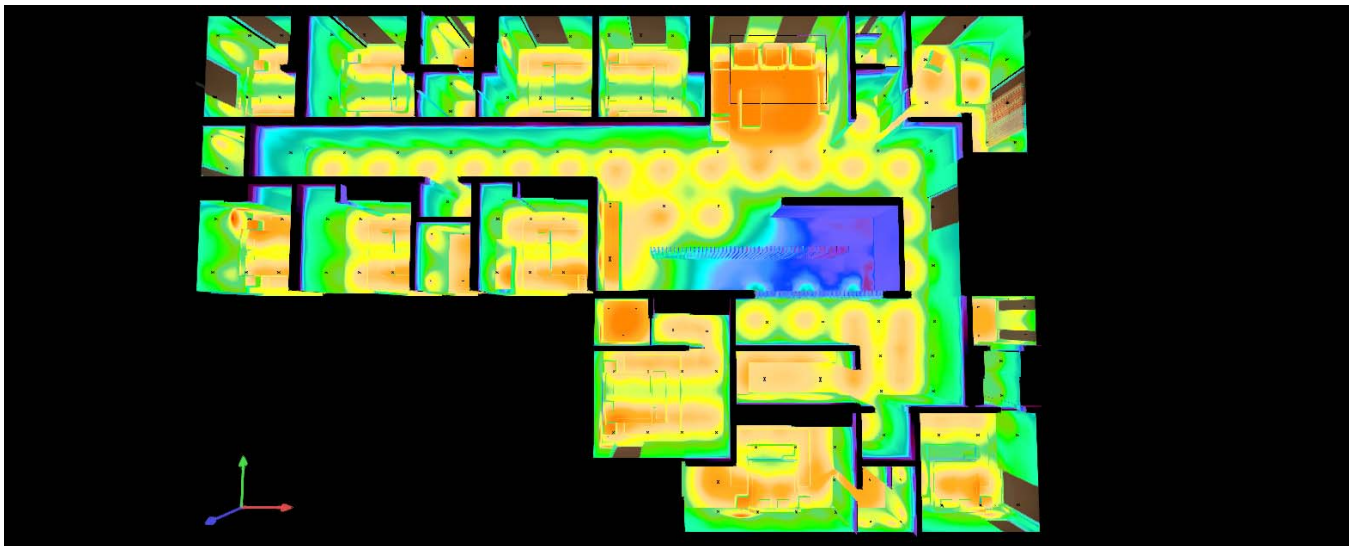
NEKO - LED-Lamps (1x LED CLLE 8W-3000K/120°)	12
NEKO - LED-Multiple DownLight (1x TSA1D 15W BB 3000K 60°, 1x TSA1D 15W BB 3000K 60°)	13
NEKO - LED-SpotLight (1x CLUB TSA3 M3 13W 35°3000K BBM)	14
NEKO - LED-SpotLight (1x MINUX 44 WC 11W 40°3000K)	15
NEKO - LED-SpotLight (1x ML26-MLA2-13W-3000K/35°)	16

Jellyfish Al Alwan Villa - Building 1 - FIRST FLOOR

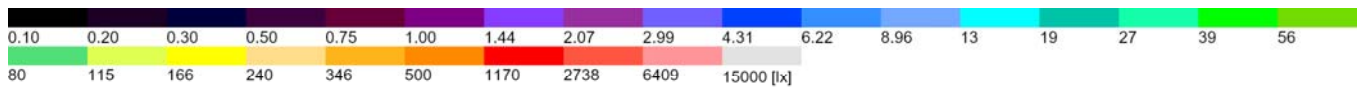
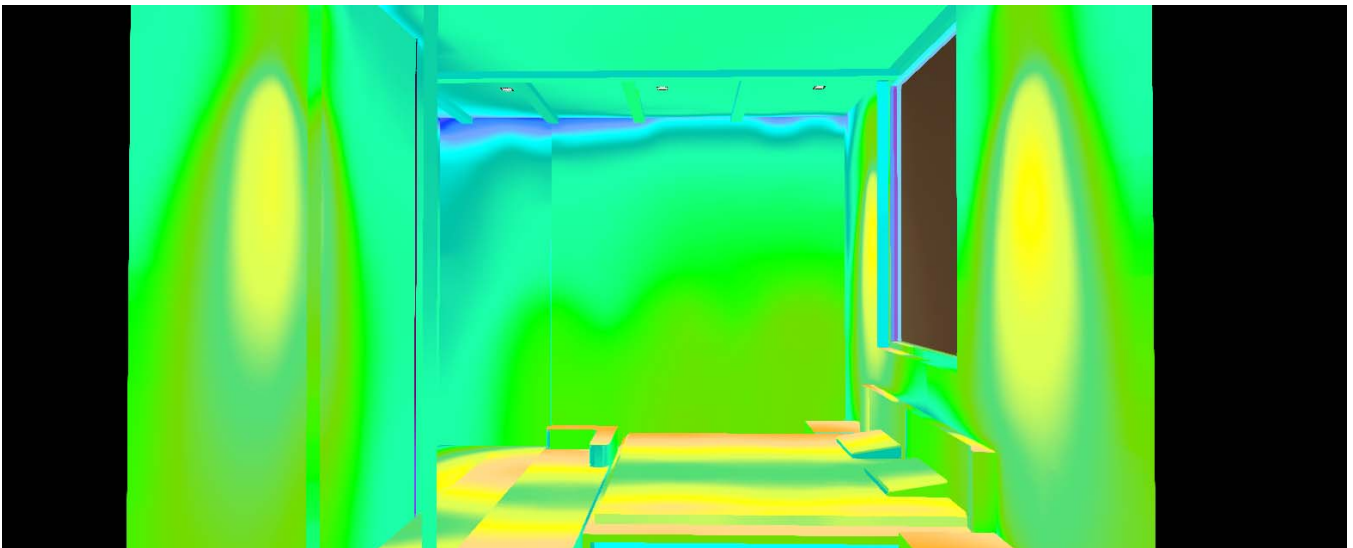
## Room 1

Summary / Light scene 1	17
Calculation objects / Light scene 1	19
BEDROOM 01 / Light scene 1 / Perpendicular illuminance	22
BEDROOM 02 / Light scene 1 / Perpendicular illuminance	23
LIVING / Light scene 1 / Perpendicular illuminance	24
BEDROOM 03 / Light scene 1 / Perpendicular illuminance	25
BEDROOM 04 / Light scene 1 / Perpendicular illuminance	26
Corridor / Light scene 1 / Perpendicular illuminance	27
SUITE 01 / Light scene 1 / Perpendicular illuminance	28
SUITE 02 / Light scene 1 / Perpendicular illuminance	29
SUITE 03 / Light scene 1 / Perpendicular illuminance	30
SUITE 04 / Light scene 1 / Perpendicular illuminance	31
LAUNDRY / Light scene 1 / Perpendicular illuminance	32
W.C 01 / Light scene 1 / Perpendicular illuminance	33
W.C 02 / Light scene 1 / Perpendicular illuminance	34

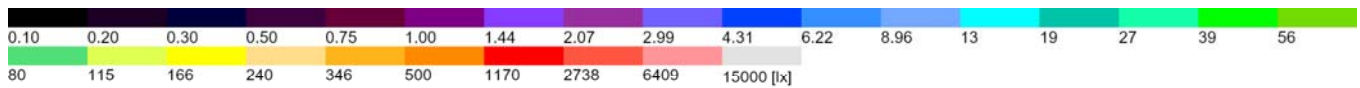
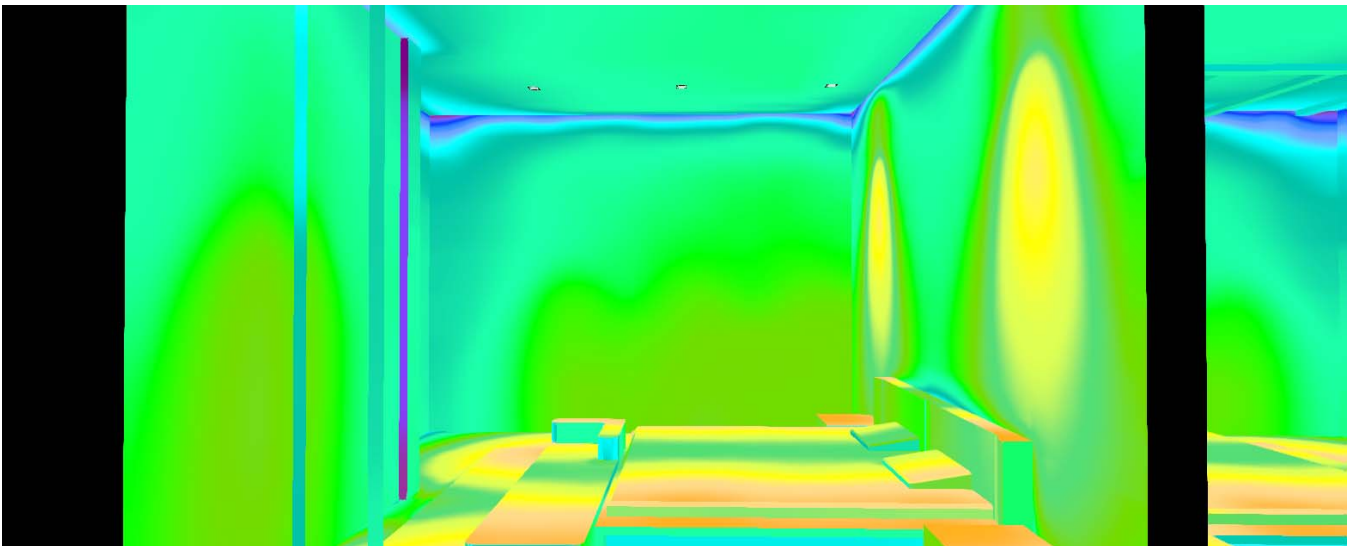
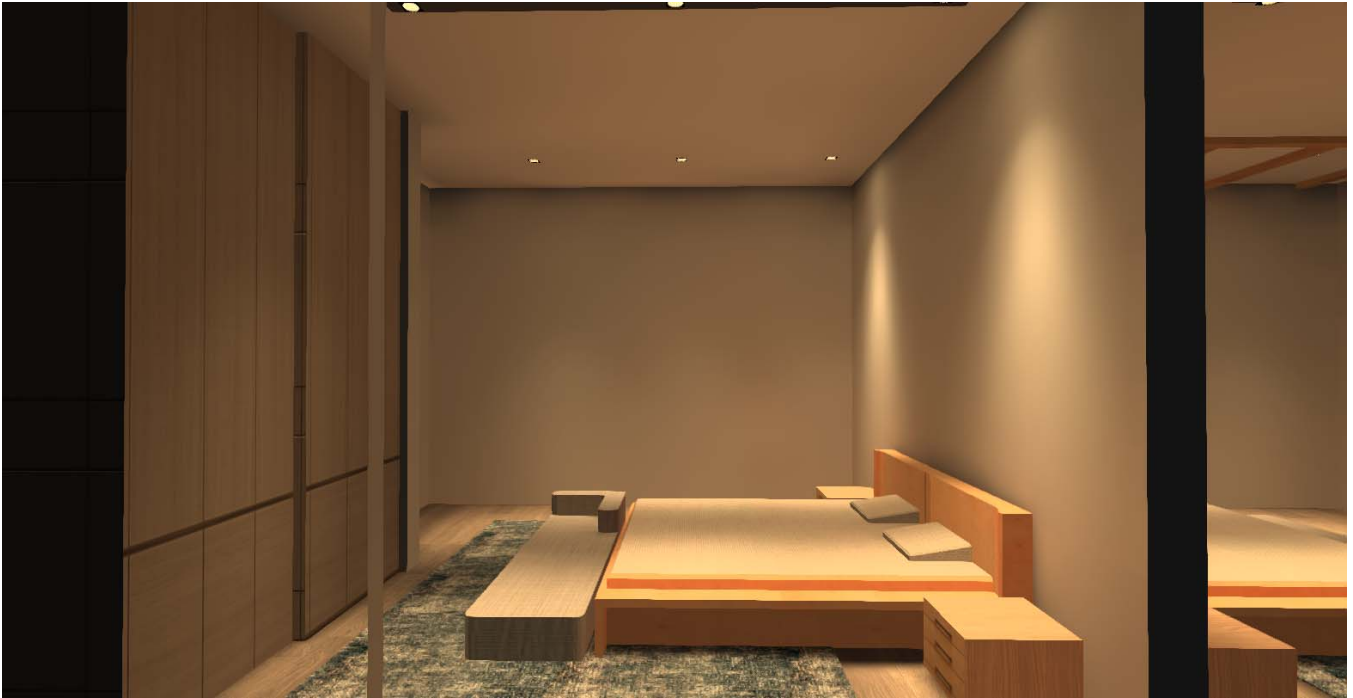
## Images



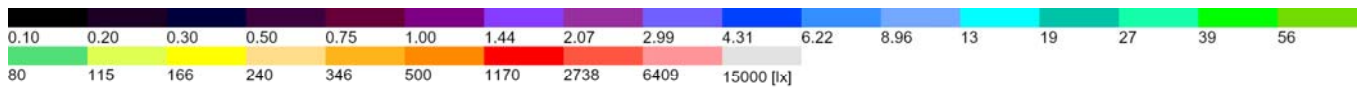
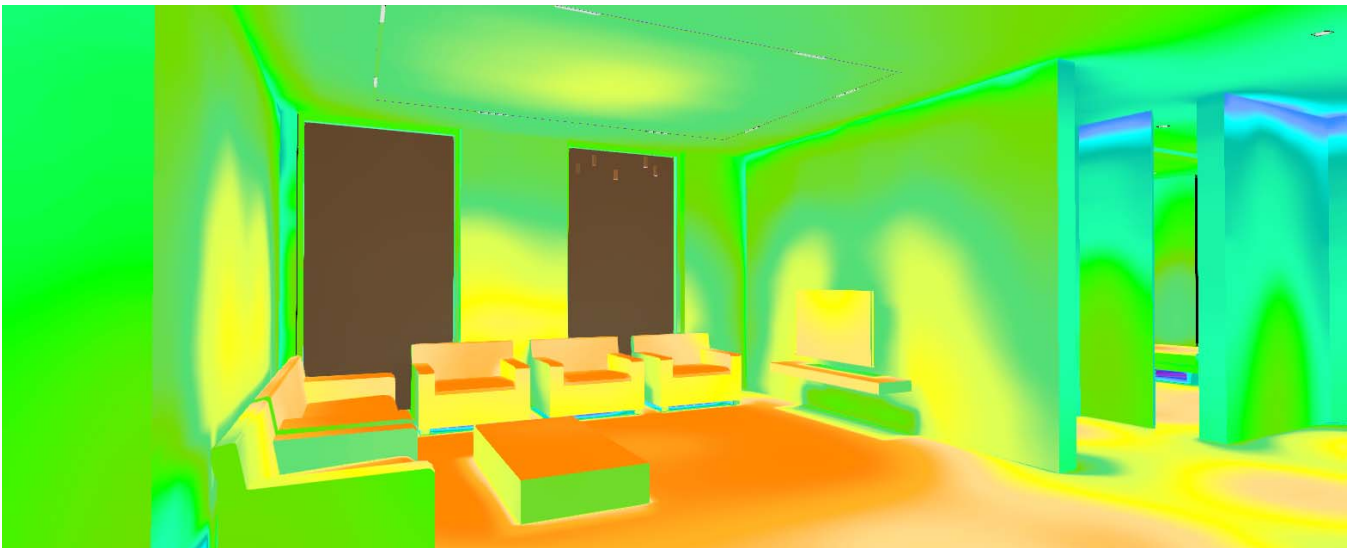
## Images



## Images

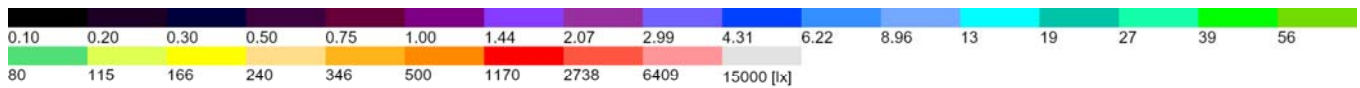
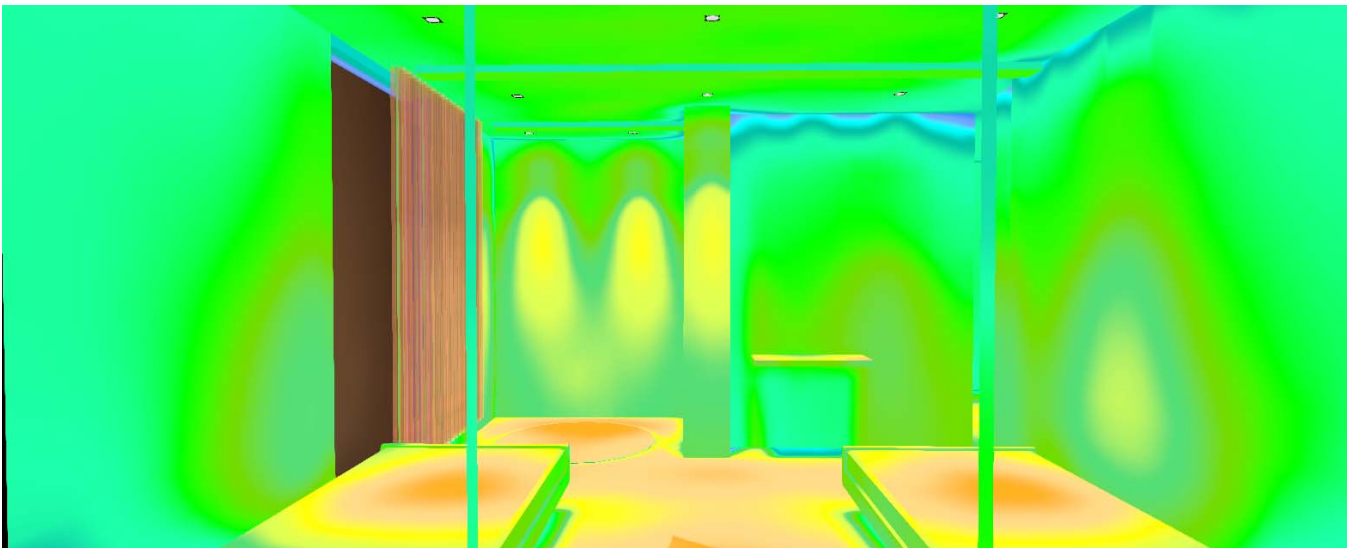


## Images

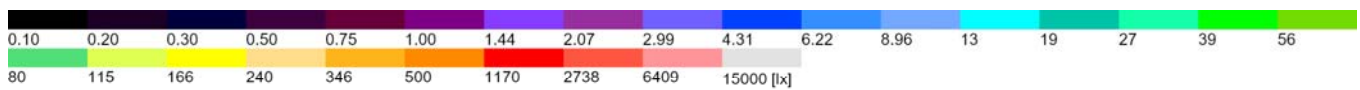
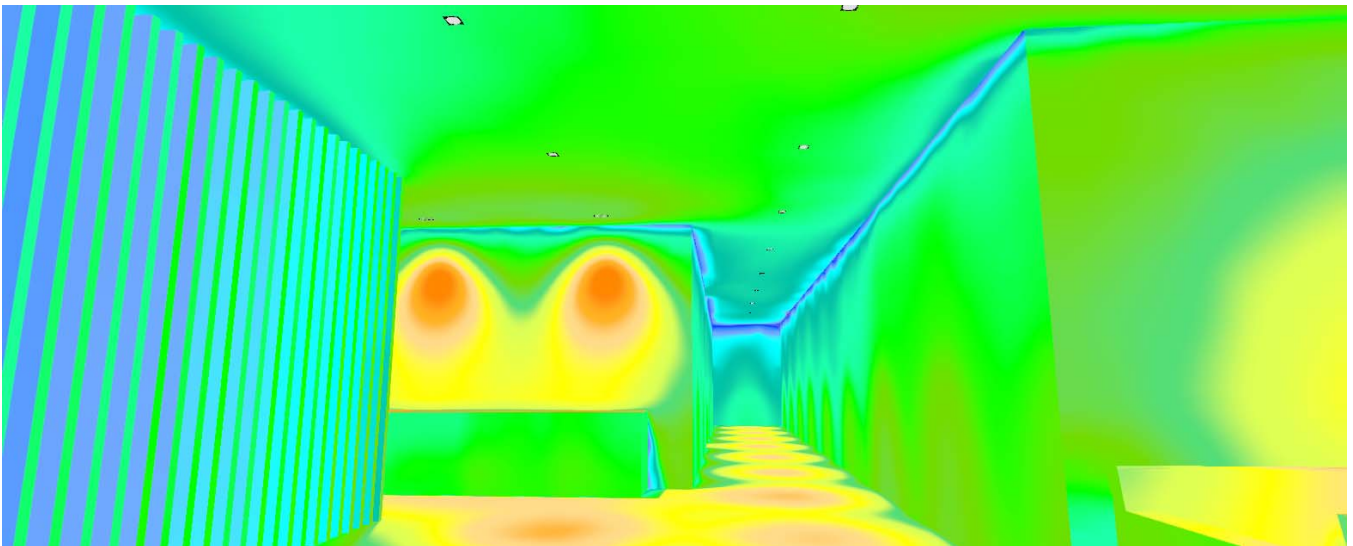




## Images

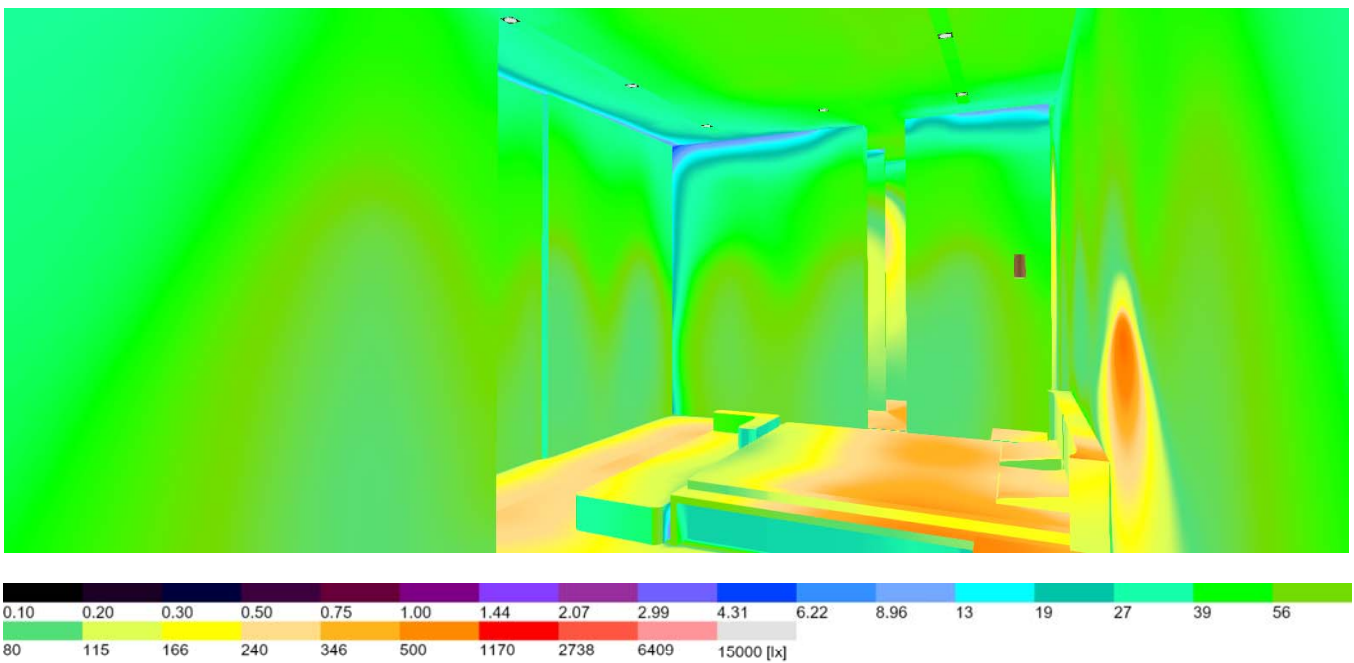


## Images

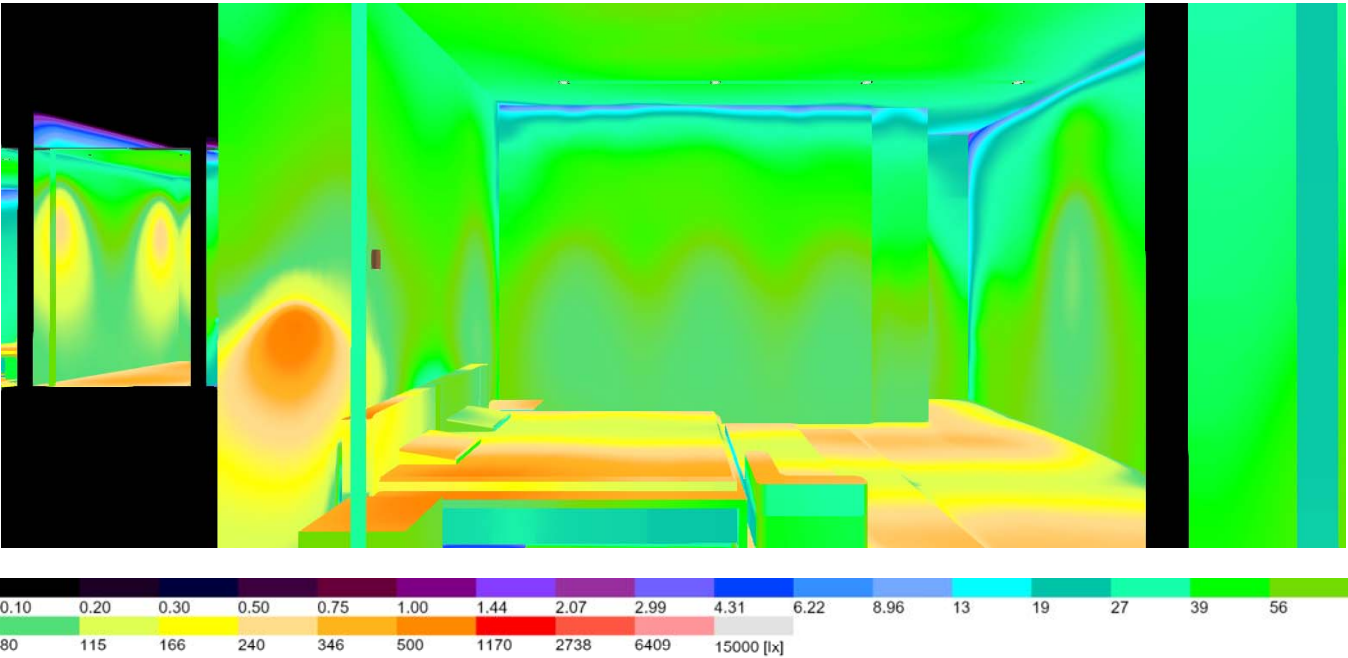




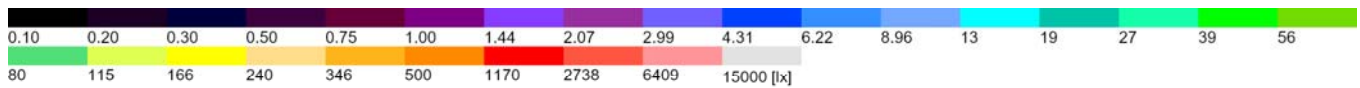
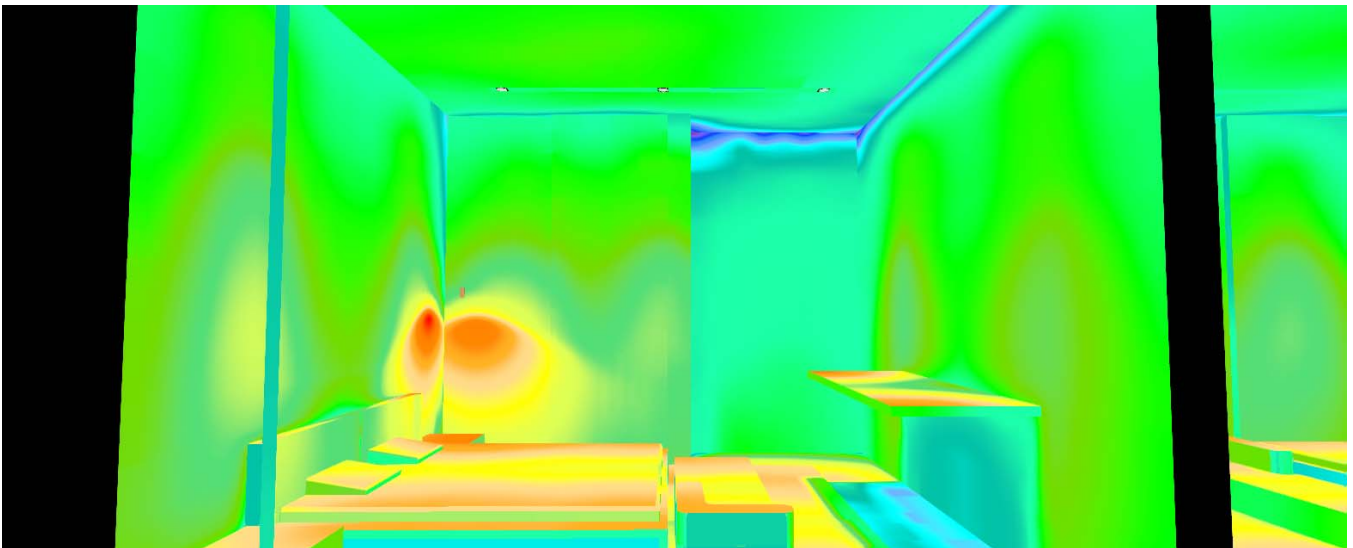
## Images



Images



## Images



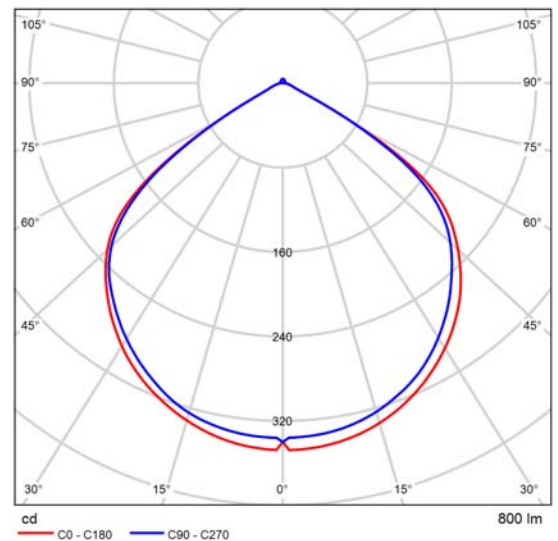
## Product data sheet

### NEKO - LED-Lamps



Article No.	LED CLLE 8W-3000K/120°
P	8.0 W
$\Phi_{\text{Luminaire}}$	800 lm
Luminous efficacy	100.0 lm/W
CCT	3000 K
CRI	90

### Description



Polar LDC

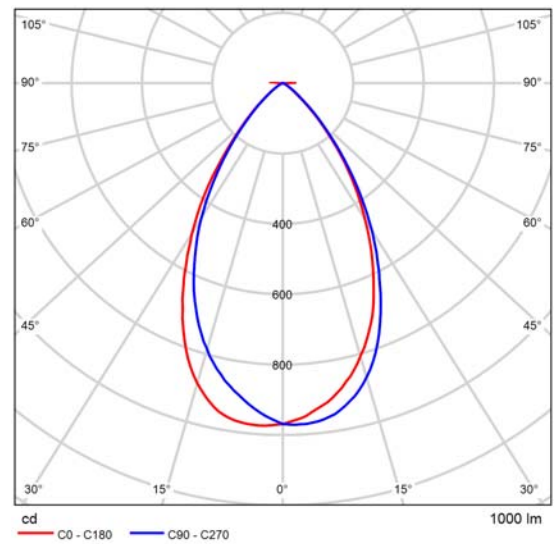
## Product data sheet

### NEKO - LED-Multiple DownLight



Article No.	TSA1D 2×15W BB 3000K 60°
P	30.0 W
$\Phi_{\text{Luminaire}}$	2000 lm
Luminous efficacy	66.7 lm/W
CCT	3000 K
CRI	90

### Specification



Polar LDC for Light emission 1 and 2



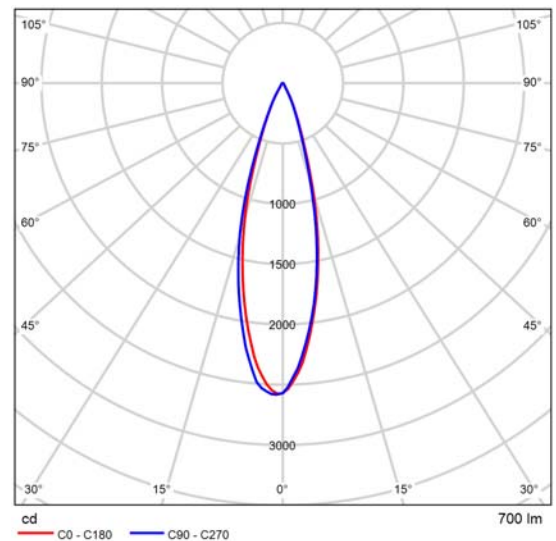
## Product data sheet

### NEKO - LED-SpotLight



Article No.	CLUB TSA3 M3 13W 35°3000K BBM
P	13.0 W
$\Phi_{\text{Luminaire}}$	700 lm
Luminous efficacy	53.8 lm/W
CCT	3000 K
CRI	90

#### Description



Polar LDC

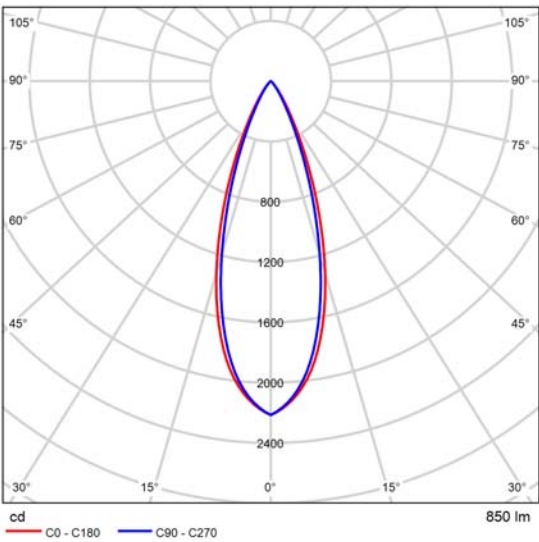
Product data sheet

NEKO - LED-SpotLight

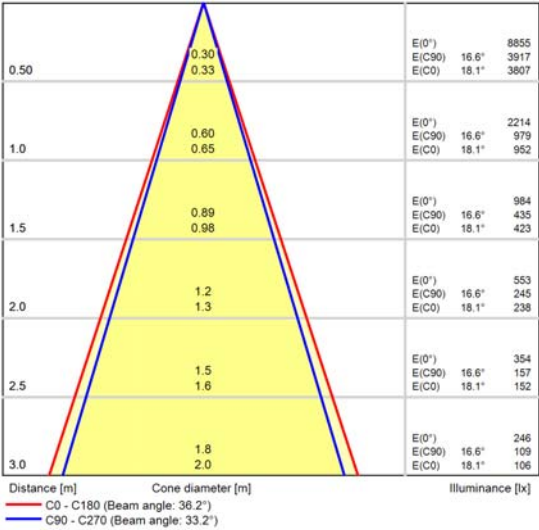


Article No.	MINUX 44 WC 11W 40°3000K
P	11.0 W
Φ <sub>Luminaire</sub>	850 lm
Luminous efficacy	77.3 lm/W
CCT	3000 K
CRI	90

Description



Polar LDC



Cone diagram

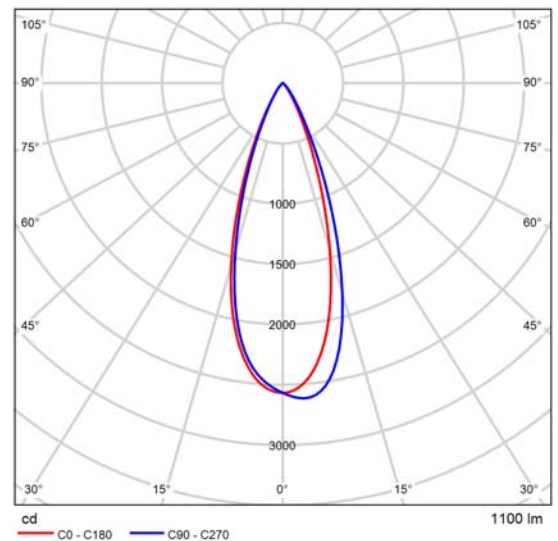
## Product data sheet

### NEKO - LED-SpotLight



Article No.	ML26- MLA2-13W-3000K/35
P	13.0 W
$\Phi_{\text{Luminaire}}$	1100 lm
Luminous efficacy	84.6 lm/W
CCT	3000 K
CRI	90

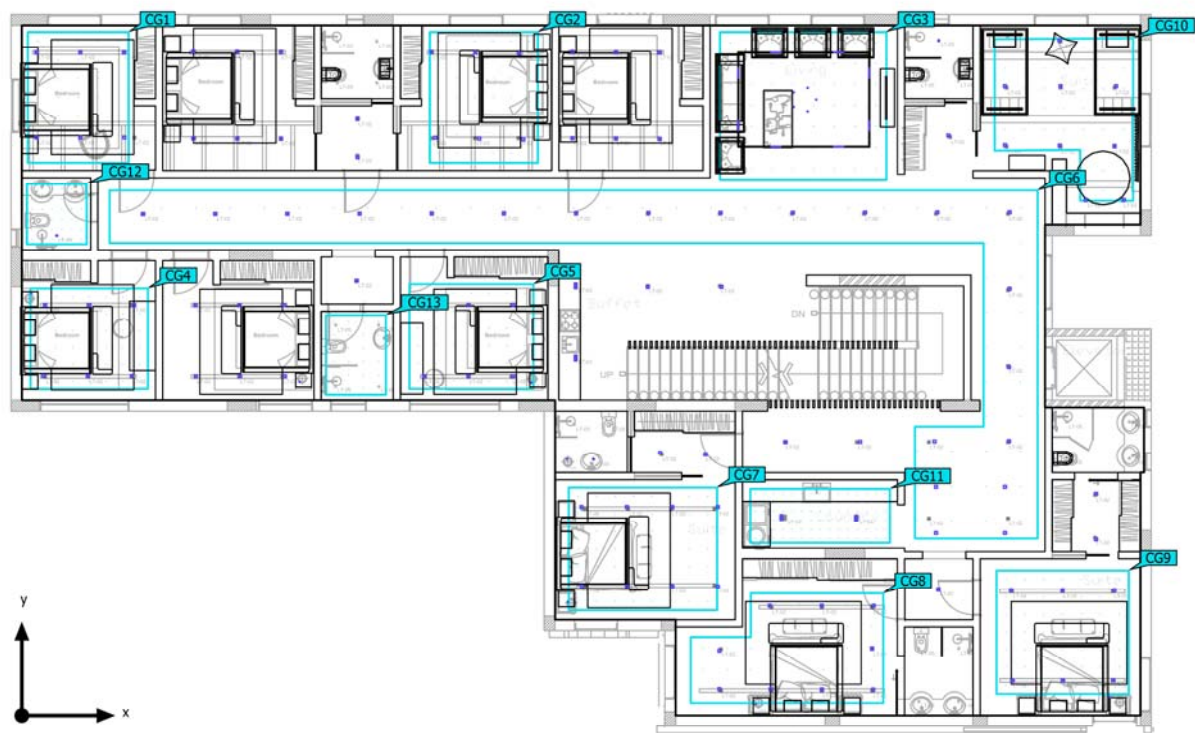
#### Description



Polar LDC

Building 1 (Light scene 1)

Summary



Ground area 444.59 m<sup>2</sup>

Reflection factors Ceiling: 65.6 %, Walls: 50.0 %, Floor: 25.0 %

Maintenance factor 0.80 (fixed)

Clearance height 2.950 m – 3.000 m

Mounting height 1.500 m – 3.089 m

## Building 1 (Light scene 1)

## Summary

## Results

	Symbol	Calculated	Target	Check	Index
Glare valuation <sup>(1)</sup>	R <sub>UG, max</sub>	16	≤ 19	✓	
Energy estimation <sup>(2)</sup>	Consumption	[2740.08 - 4348.58] kWh/a	max. 15600 kWh/a	✓	
Room	Lighting power density	3.95 W/m <sup>2</sup>	–		

(1) Based on a rectangular space of 31.160 m x 19.202 m and SHR of 0.25.

(2) Calculated using DIN:18599-4.

Utilisation profile: DIALux presetting (34.2 Standard (office))

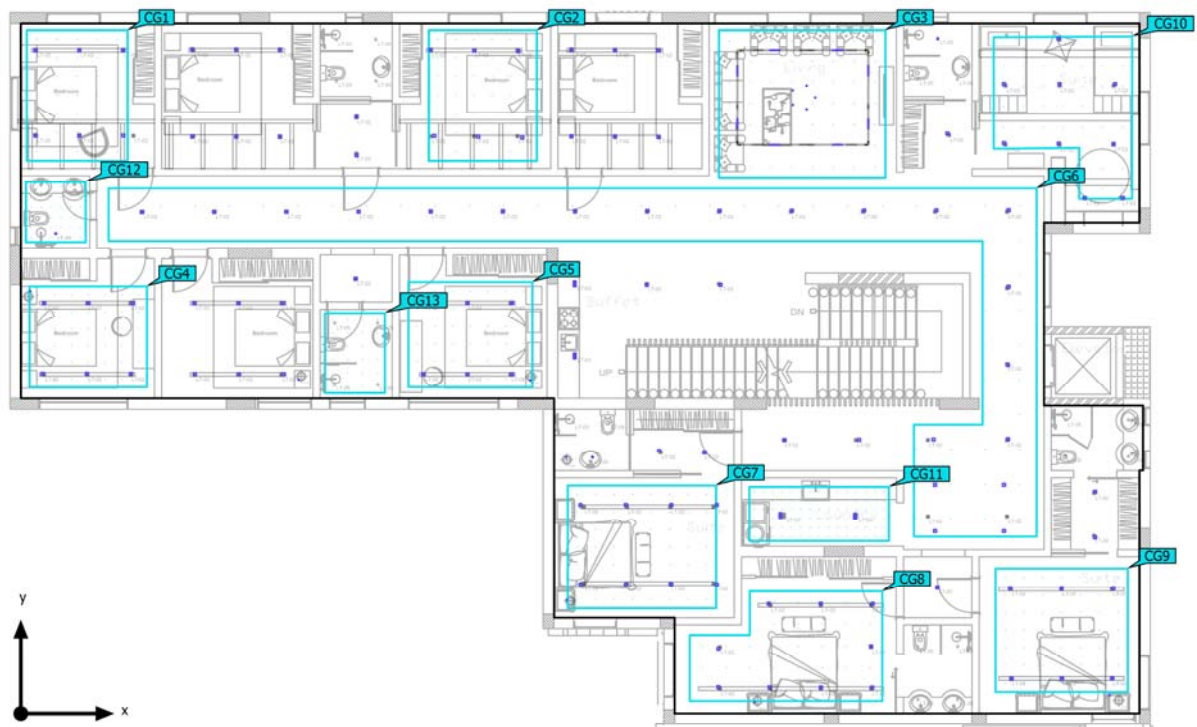
## Luminaire list

pcs.	Manufacturer	Article No.	Article name	R <sub>UG</sub>	P	Φ	Luminous efficacy
108	NEKO	CLUB TSA3 M3 13W 35°3000K BBM	LED-SpotLight	–	13.0 W	700 lm	53.8 lm/W
12	NEKO	LED CLLE 8W-3000K/ 120°	LED-Lamps	–	8.0 W	800 lm	100.0 lm/W
3	NEKO	MINUX 44 WC 11W 40°3000K	LED-SpotLight	16	11.0 W	850 lm	77.3 lm/W
8	NEKO	ML26- MLA2-13W -3000K/35°	LED-SpotLight	–	13.0 W	1100 lm	84.6 lm/W
4	NEKO	TSA1D 2×15W BB 3000K 60°	LED-Multiple DownLight	–	30.0 W	2000 lm	66.7 lm/W



Building 1 (Light scene 1)

## Calculation objects



## Building 1 (Light scene 1)

### Calculation objects

#### Calculation surfaces

Properties	$\bar{E}$	$E_{min}$	$E_{max}$	$U_o (g_1)$	$g_2$	Index
BEDROOM 01 Perpendicular illuminance Height: 0.850 m	244 lx	45.8 lx	488 lx	0.19	0.094	CG1
BEDROOM 02 Perpendicular illuminance Height: 0.850 m	234 lx	41.2 lx	478 lx	0.18	0.086	CG2
LIVING Perpendicular illuminance Height: 0.850 m	512 lx	123 lx	753 lx	0.24	0.16	CG3
BEDROOM 03 Perpendicular illuminance Height: 0.850 m	302 lx	104 lx	993 lx	0.34	0.10	CG4
BEDROOM 04 Perpendicular illuminance Height: 0.850 m	291 lx	96.0 lx	897 lx	0.33	0.11	CG5
Corridor Perpendicular illuminance Height: 0.850 m	228 lx	43.8 lx	472 lx	0.19	0.093	CG6
SUITE 01 Perpendicular illuminance Height: 0.850 m	270 lx	65.0 lx	814 lx	0.24	0.080	CG7
SUITE 02 Perpendicular illuminance Height: 0.850 m	302 lx	53.4 lx	702 lx	0.18	0.076	CG8
SUITE 03 Perpendicular illuminance Height: 0.850 m	231 lx	37.3 lx	698 lx	0.16	0.053	CG9
SUITE 04 Perpendicular illuminance Height: 0.850 m	253 lx	51.6 lx	464 lx	0.20	0.11	CG10
LAUNDRY Perpendicular illuminance Height: 0.850 m	329 lx	186 lx	411 lx	0.57	0.45	CG11

## Building 1 (Light scene 1)

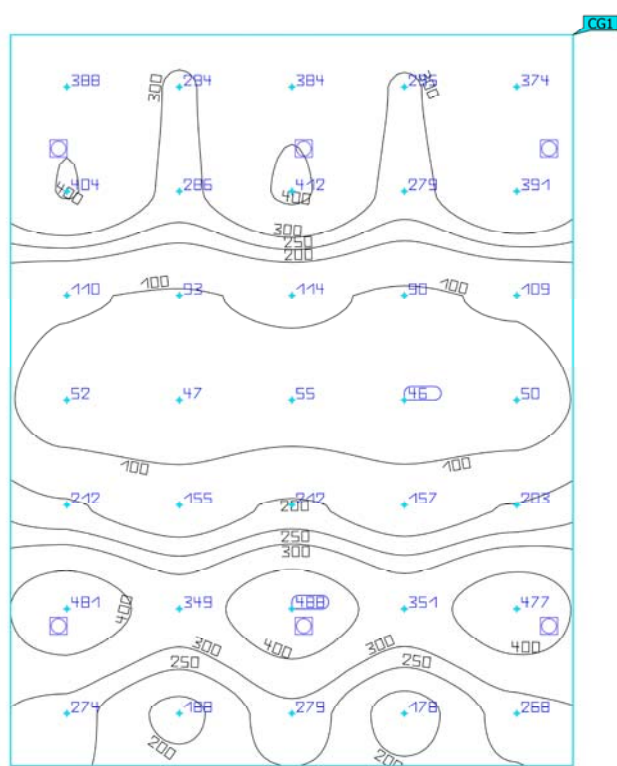
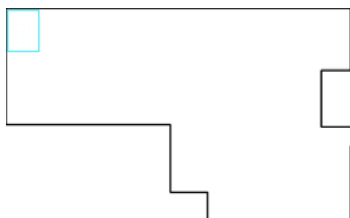
**Calculation objects**

W.C 01 Perpendicular illuminance Height: 0.850 m	405 lx	223 lx	493 lx	0.55	0.45	CG12
W.C 02 Perpendicular illuminance Height: 0.850 m	374 lx	251 lx	471 lx	0.67	0.53	CG13

Utilisation profile: DIALux presetting (34.2 Standard (office))

Building 1 (Light scene 1)

## BEDROOM 01

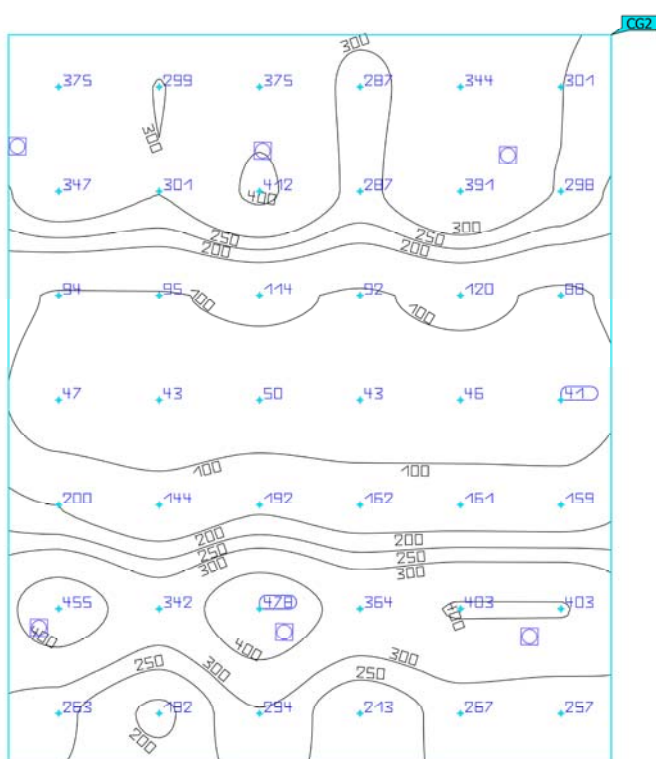
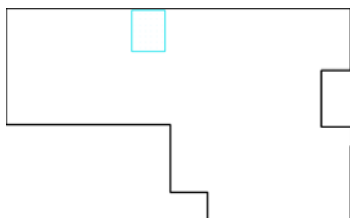


Properties	$\bar{E}$	$E_{min}$	$E_{max}$	$U_o (g_1)$	$g_2$	Index
BEDROOM 01	244 lx	45.8 lx	488 lx	0.19	0.094	CG1
Perpendicular illuminance						
Height: 0.850 m						

Utilisation profile: DIALux presetting (34.2 Standard (office))

Building 1 (Light scene 1)

## BEDROOM 02



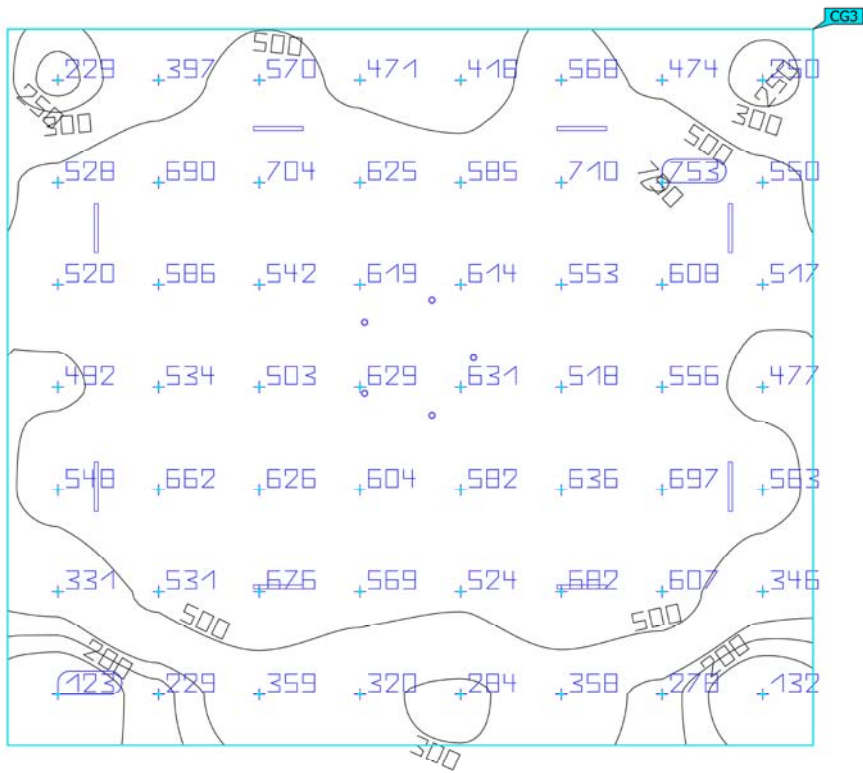
Properties	$\bar{E}$	$E_{min}$	$E_{max}$	$U_o (g_1)$	$g_2$	Index
BEDROOM 02 Perpendicular illuminance Height: 0.850 m	234 lx	41.2 lx	478 lx	0.18	0.086	CG2

Utilisation profile: DIALux presetting (34.2 Standard (office))



Building 1 (Light scene 1)

LIVING

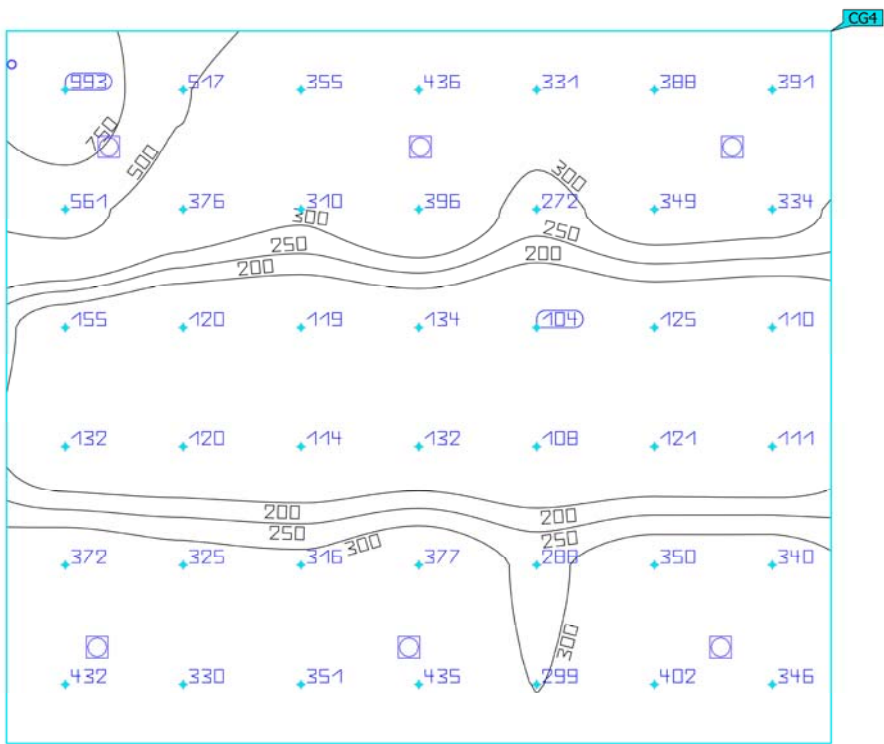
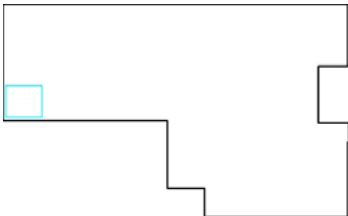


Properties	$\bar{E}$	$E_{min}$	$E_{max}$	$U_o (g_1)$	$g_2$	Index
LIVING Perpendicular illuminance Height: 0.850 m	512 lx	123 lx	753 lx	0.24	0.16	CG3

Utilisation profile: DIALux presetting (34.2 Standard (office))

Building 1 (Light scene 1)

BEDROOM 03

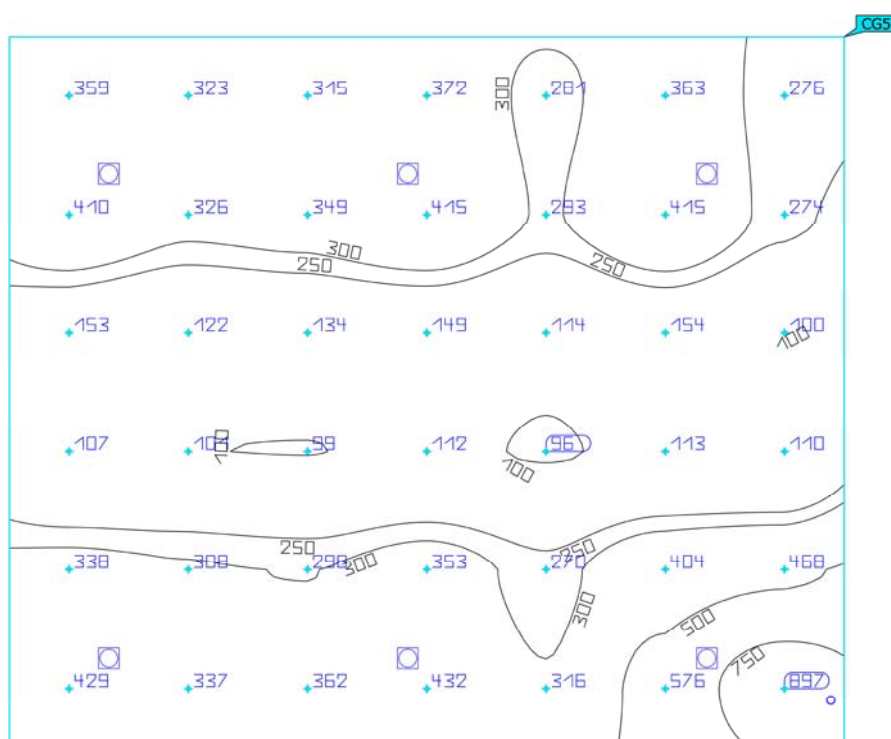
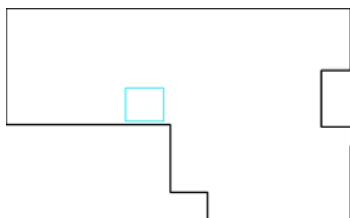


Properties	$\bar{E}$	$E_{min}$	$E_{max}$	$U_o (g_1)$	$g_2$	Index
BEDROOM 03 Perpendicular illuminance Height: 0.850 m	302 lx	104 lx	993 lx	0.34	0.10	CG4

Utilisation profile: DIALux presetting (34.2 Standard (office))

Building 1 (Light scene 1)

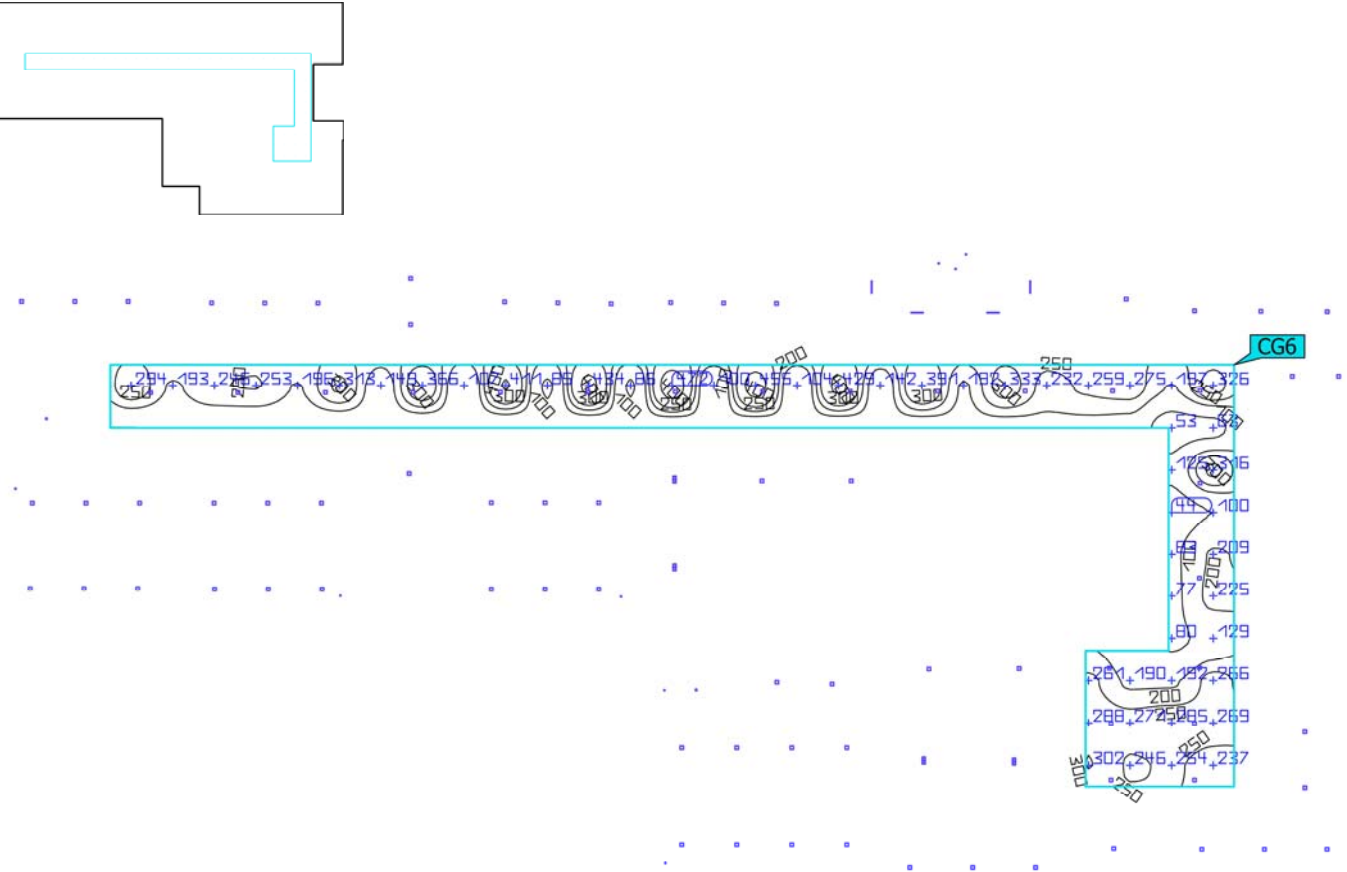
## BEDROOM 04



Properties	$\bar{E}$	$E_{min}$	$E_{max}$	$U_o (g_1)$	$g_2$	Index
BEDROOM 04 Perpendicular illuminance Height: 0.850 m	291 lx	96.0 lx	897 lx	0.33	0.11	CG5

Utilisation profile: DIALux presetting (34.2 Standard (office))

Building 1 (Light scene 1)  
**Corridor**

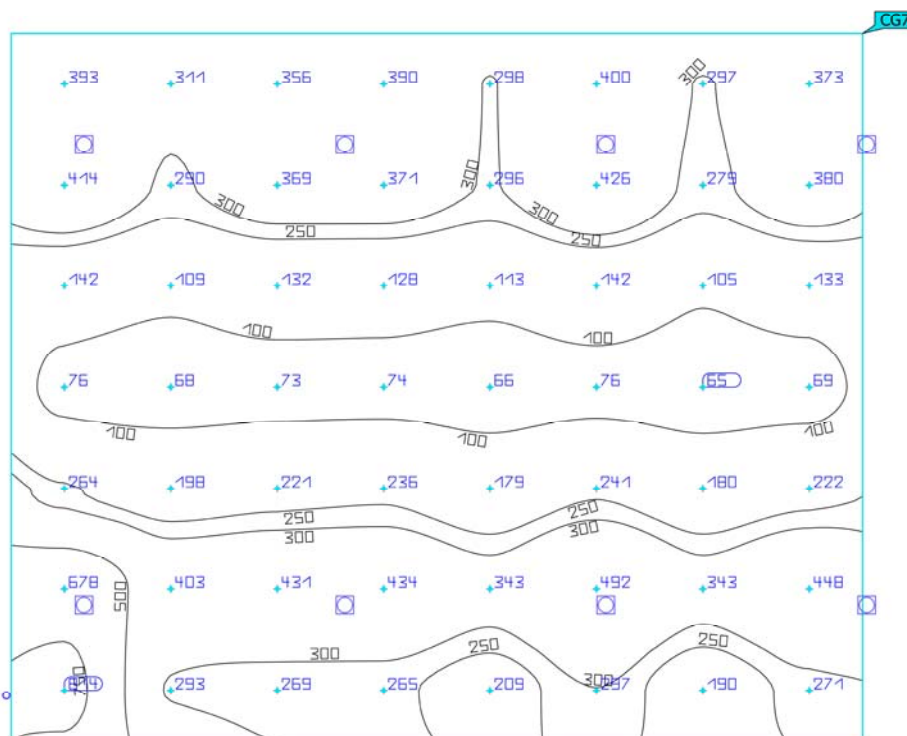
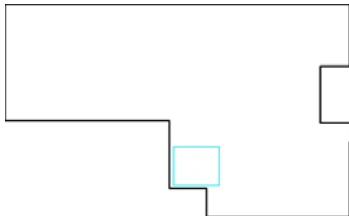


Properties	$\bar{E}$	$E_{min}$	$E_{max}$	$U_o (g_1)$	$g_2$	Index
Corridor Perpendicular illuminance Height: 0.850 m	228 lx	43.8 lx	472 lx	0.19	0.093	CG6

Utilisation profile: DIALux presetting (34.2 Standard (office))

Building 1 (Light scene 1)

## SUITE 01



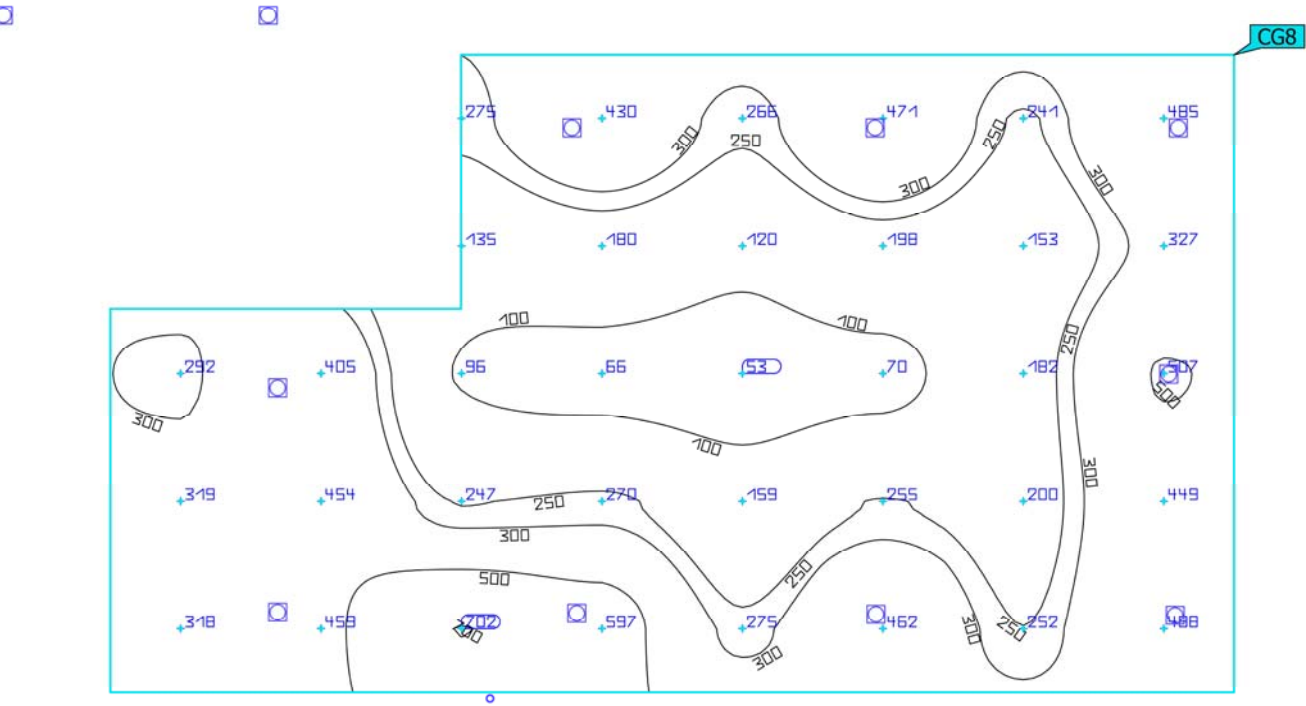
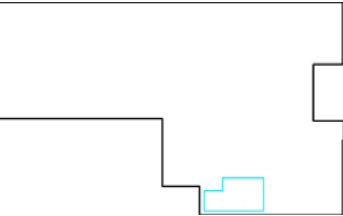
Properties	$\bar{E}$	$E_{min}$	$E_{max}$	$U_o (g_1)$	$g_2$	Index
SUITE 01 Perpendicular illuminance Height: 0.850 m	270 lx	65.0 lx	814 lx	0.24	0.080	CG7

Utilisation profile: DIALux presetting (34.2 Standard (office))



Building 1 (Light scene 1)

SUITE 02

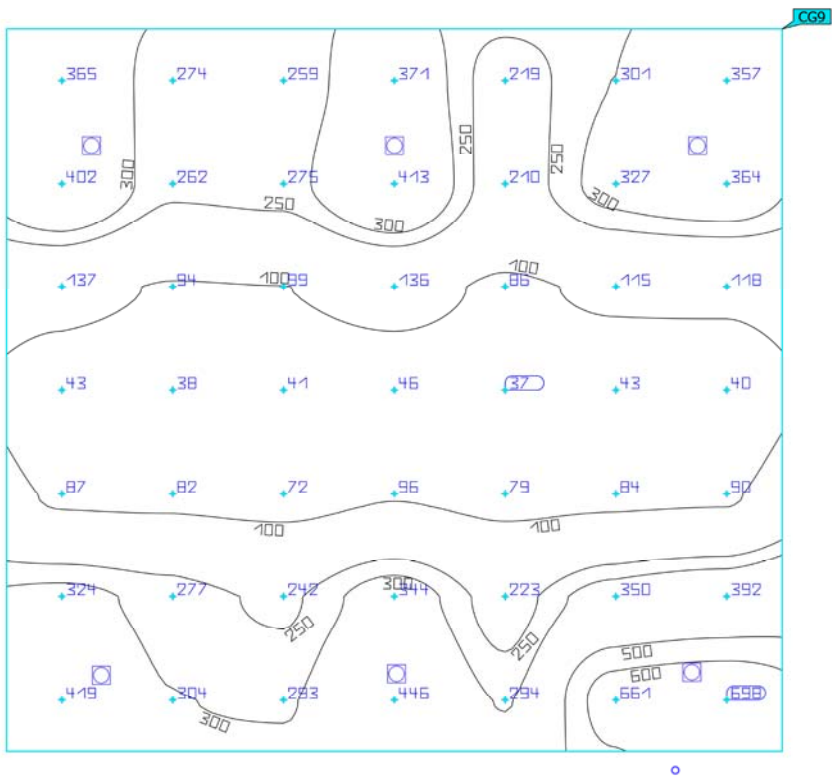
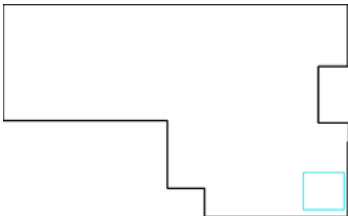


Properties	$\bar{E}$	$E_{min}$	$E_{max}$	$U_o (g_1)$	$g_2$	Index
SUITE 02 Perpendicular illuminance Height: 0.850 m	302 lx	53.4 lx	702 lx	0.18	0.076	CG8

Utilisation profile: DIALux presetting (34.2 Standard (office))

Building 1 (Light scene 1)

SUITE 03

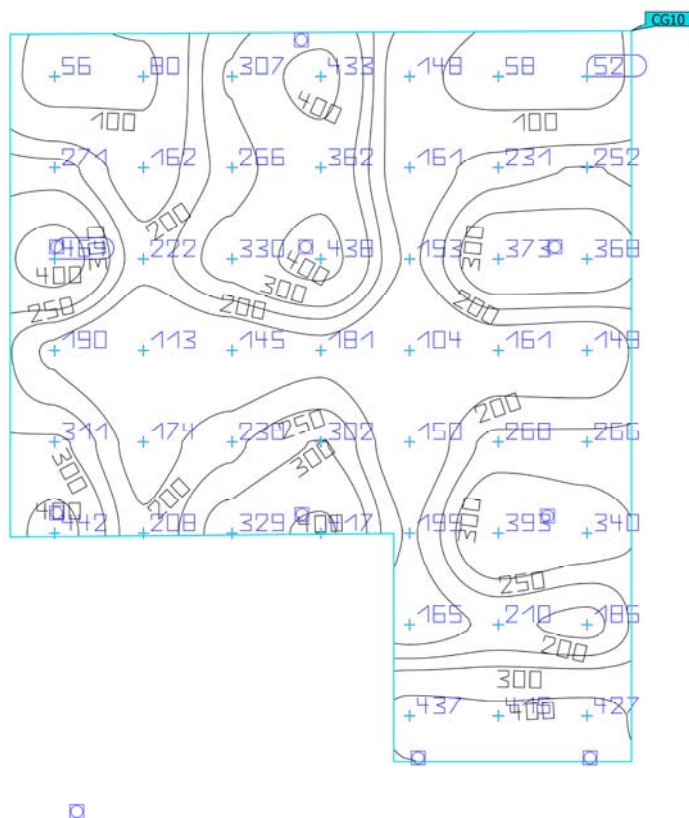
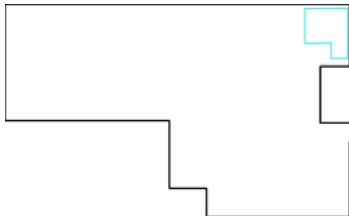


Properties	$\bar{E}$	$E_{min}$	$E_{max}$	$U_o (g_1)$	$g_2$	Index
SUITE 03 Perpendicular illuminance Height: 0.850 m	231 lx	37.3 lx	698 lx	0.16	0.053	CG9

Utilisation profile: DIALux presetting (34.2 Standard (office))

Building 1 (Light scene 1)

## SUITE 04

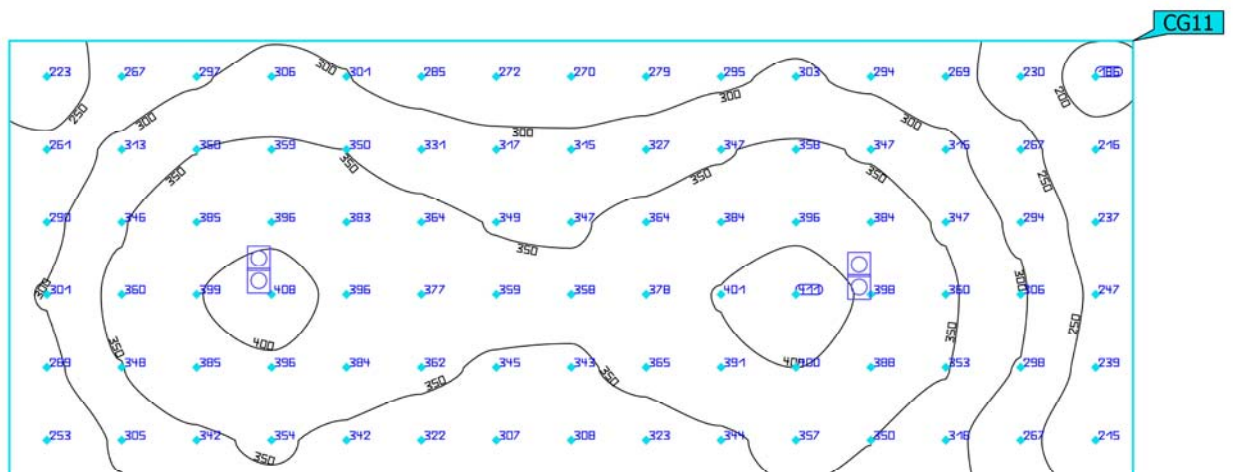
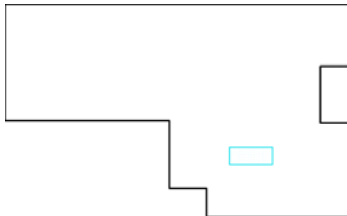


Properties	$\bar{E}$	$E_{min}$	$E_{max}$	$U_o (g_1)$	$g_2$	Index
SUITE 04 Perpendicular illuminance Height: 0.850 m	253 lx	51.6 lx	464 lx	0.20	0.11	CG10

Utilisation profile: DIALux presetting (34.2 Standard (office))

Building 1 (Light scene 1)

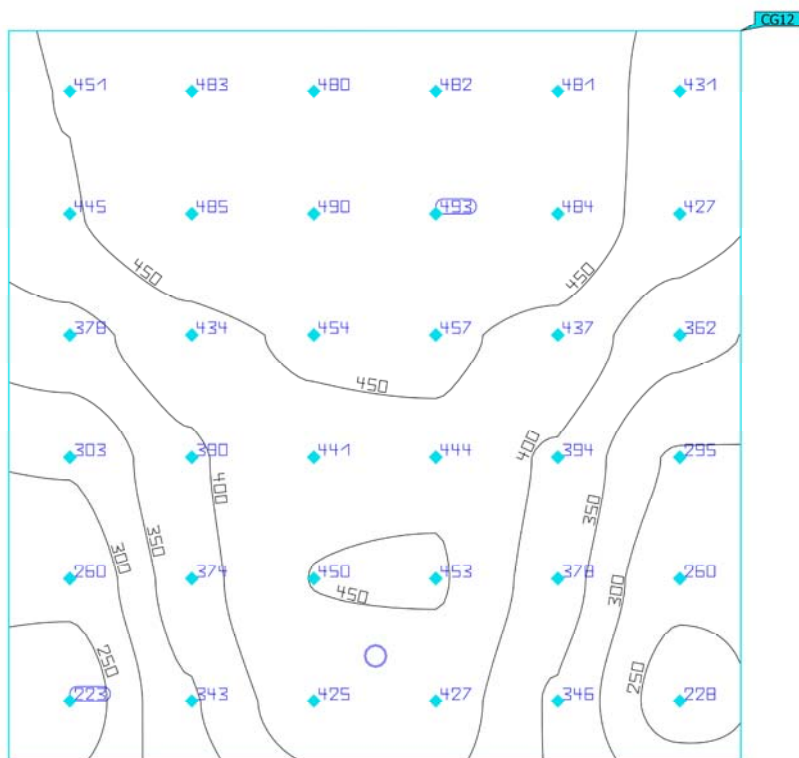
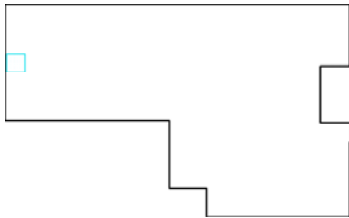
## LAUNDRY



Properties	$\bar{E}$	$E_{min}$	$E_{max}$	$U_o (g_1)$	$g_2$	Index
LAUNDRY Perpendicular illuminance Height: 0.850 m	329 lx	186 lx	411 lx	0.57	0.45	CG11

Utilisation profile: DIALux presetting (34.2 Standard (office))

Building 1 (Light scene 1)

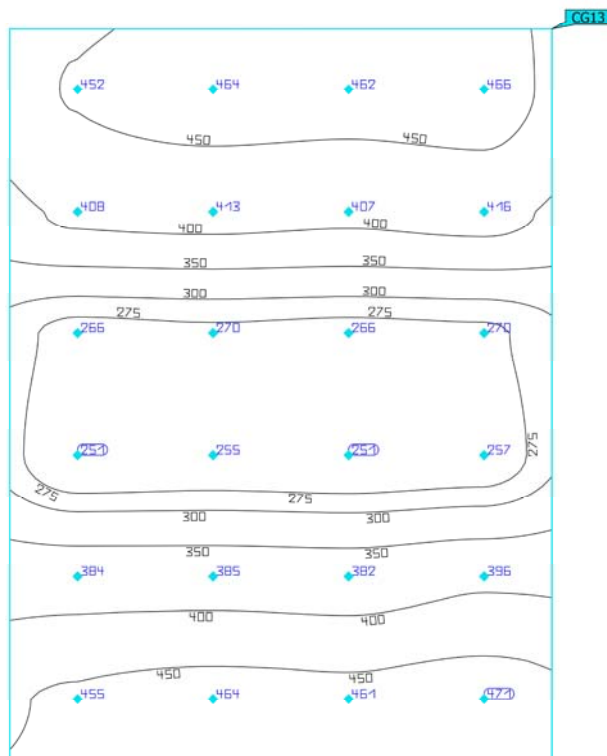
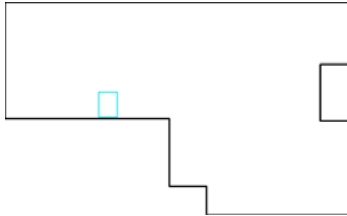
**W.C 01**

Properties	$\bar{E}$	$E_{min}$	$E_{max}$	$U_o (g_1)$	$g_2$	Index
W.C 01 Perpendicular illuminance Height: 0.850 m	405 lx	223 lx	493 lx	0.55	0.45	CG12

Utilisation profile: DIALux presetting (34.2 Standard (office))

Building 1 (Light scene 1)

## W.C 02



Properties	$\bar{E}$	$E_{min}$	$E_{max}$	$U_o (g_1)$	$g_2$	Index
W.C 02	374 lx	251 lx	471 lx	0.67	0.53	CG13
Perpendicular illuminance						
Height: 0.850 m						

Utilisation profile: DIALux presetting (34.2 Standard (office))